

*Feet in the sand*



## A RARE PEARL IN A GRAND CASE

### 6 APARTMENT UNITS

In the heart of Grand Case, on the beach, discover this exceptional residence "La Plage"

In a magical setting where nature and architecture meet, "La Plage" offers a breathtaking view of the Caribbean Sea.

Reserved for a privileged few, this upscale condominium is crafted with noble materials, combining wood and stone. The perfect harmony for a gentle lifestyle and an environmental respect.

From

**1'265.000€**

[contact@laplagegrandcase.com](mailto:contact@laplagegrandcase.com)

**+ 590 690 24 39 41**





**BOOK NOW  
ON PRESALE,  
WITH NO FINANCIAL COMMITMENT**



- Seaside – Private beach



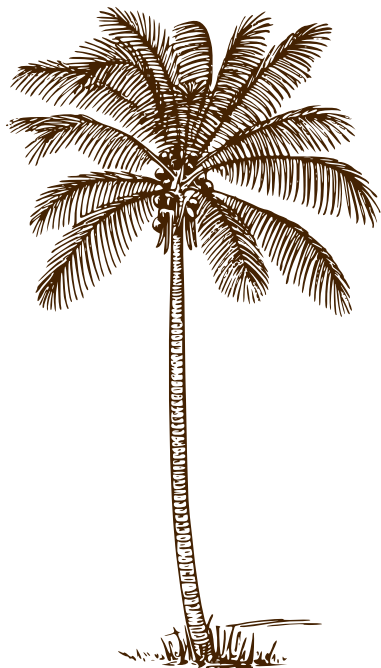
- Tropical vegetation



- Covered outdoor parking space



- Close to shops, shopping center, restaurants



La Plage” is in keeping with the authentic spirit of this fishing village that has become the gastronomic capital of the Caribbean.

The façade on the street side respects traditional Caribbean architecture, while the beach side invites you to relax. Particular attention has been paid to the vegetation, providing freshness, shade and zen.



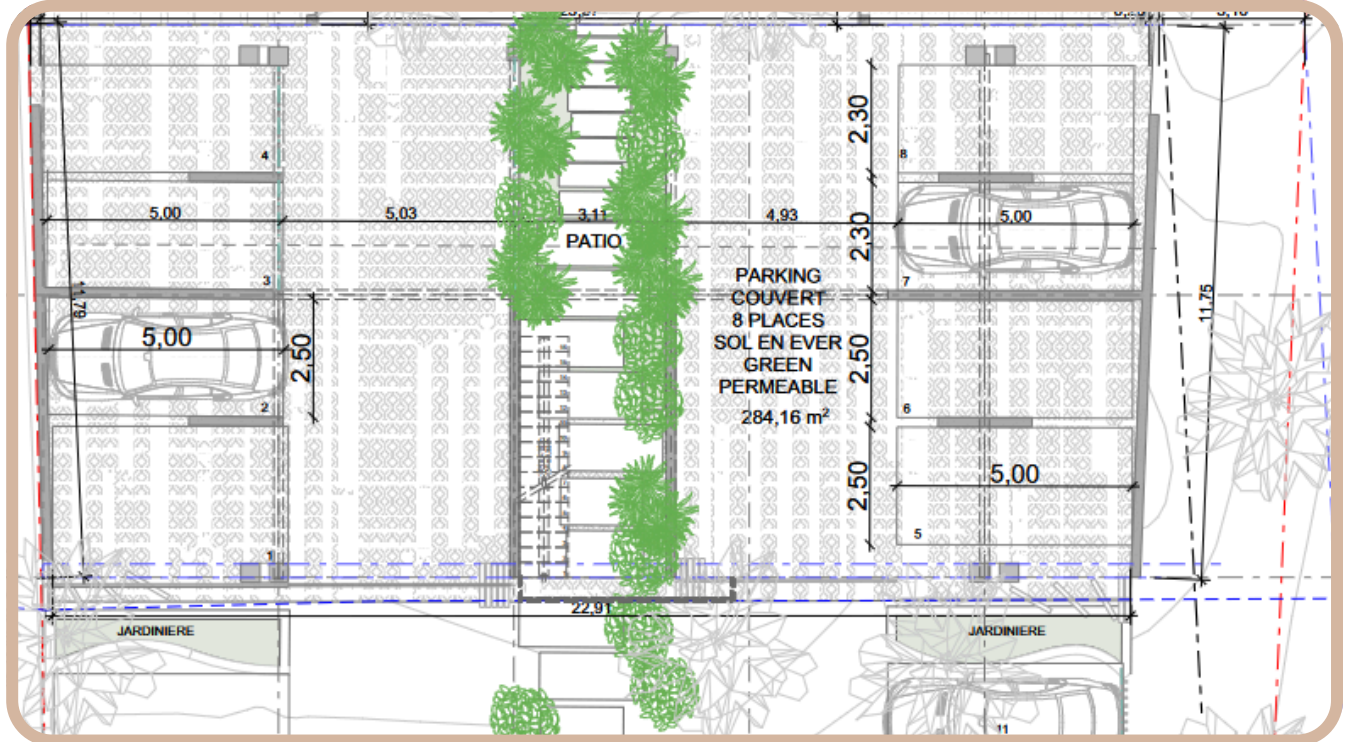
Construction to begin in Q4 2025  
Delivery scheduled for 2nd quarter 2027



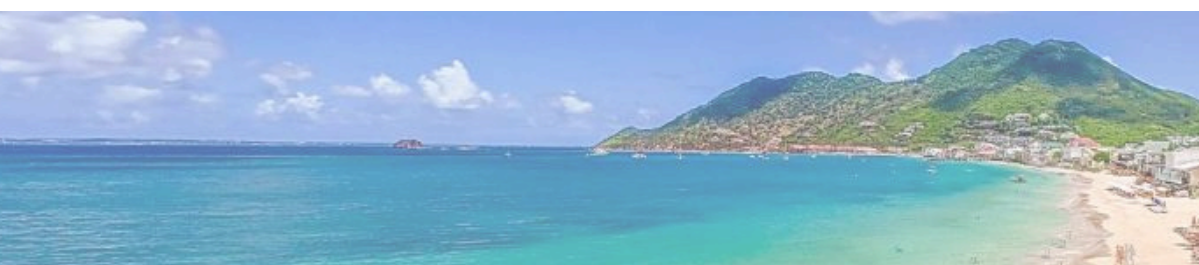
VEFA , sales contract including Building Damage and Financial Guarantee of Completion



## A RARE LOCATION HIGH STANDING



- Secure residence
- Electric gate / intercom
- Water tank / Generator
- Tropical vegetation
- Fully equipped kitchen

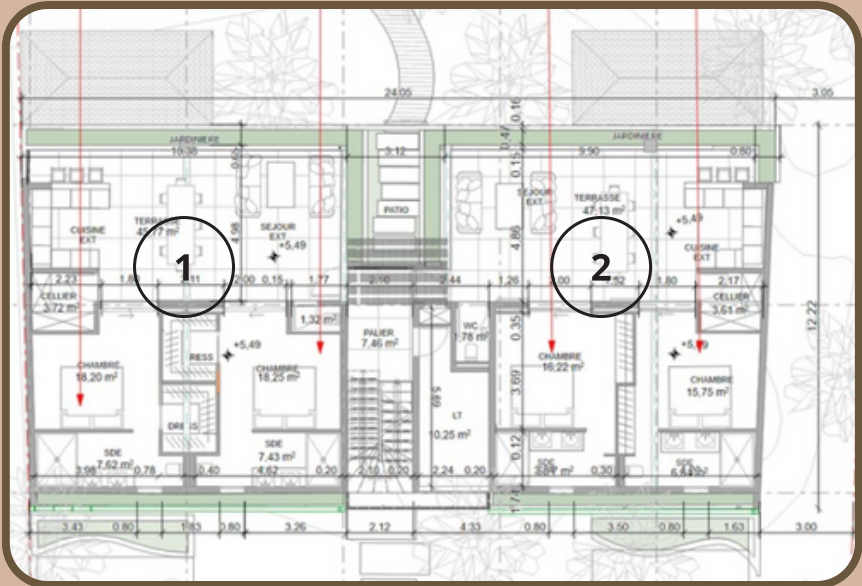




OPTIMIZED FLOOR SPACE  
AND QUALITY SERVICES



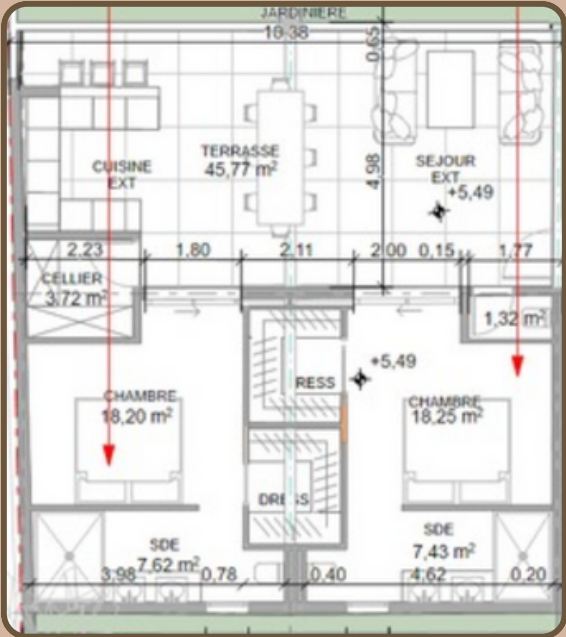
Apartments floor 1



sea view

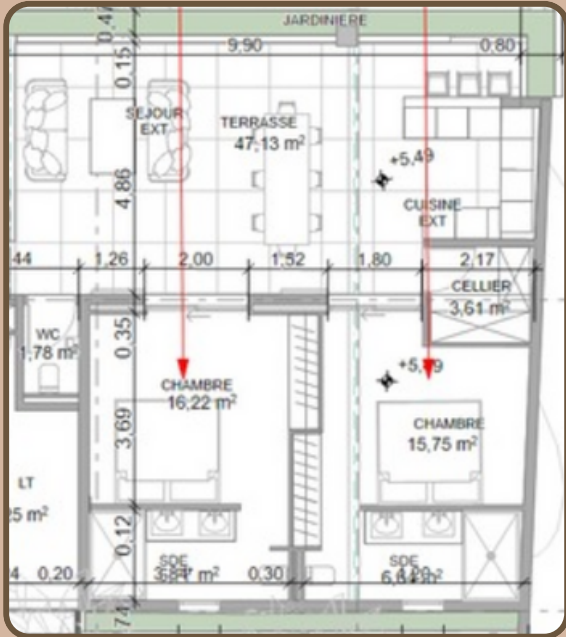
Apartment 1 - floor 1  
105 m2, 2 parking

1



Apartment 2 - floor 1  
102 m2, 2 parking

2

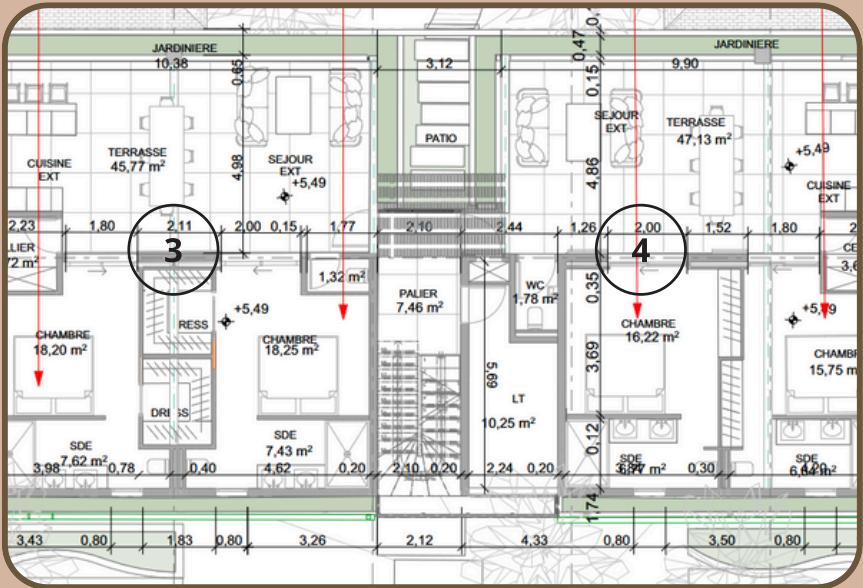




DESIGN HARMONY

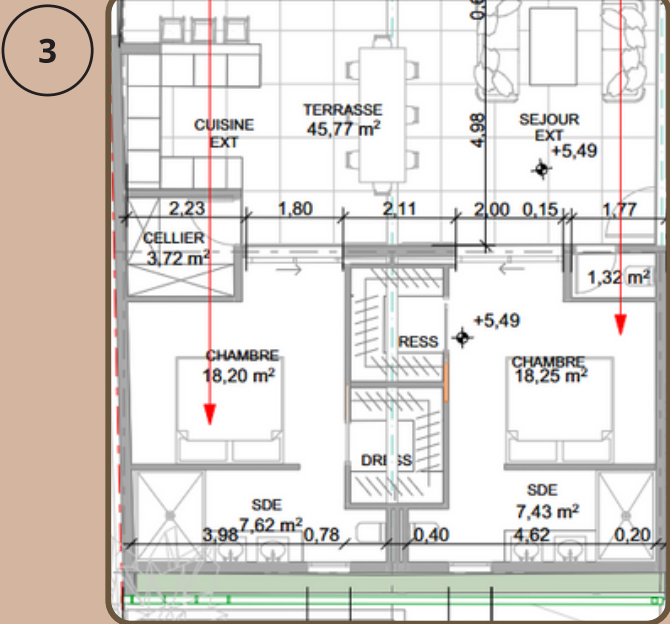


Apartments floor 2

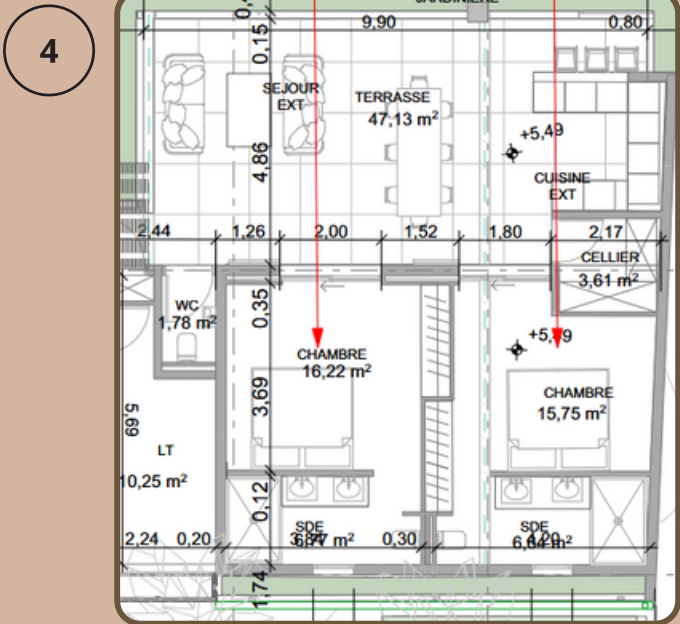


sea view

Apartment 3 - niveau 2  
105 m2, 2 parking



Apartment 4 - niveau 2  
102 m2, 2 parking





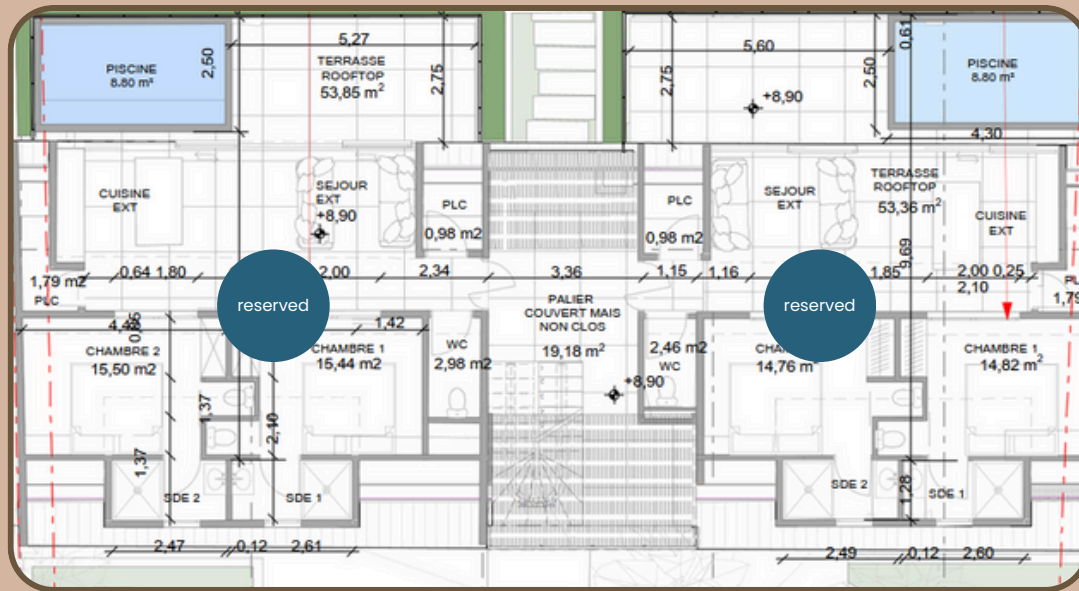
## A PRIVILEGED SETTING



Appartments floor 3

Appartement 5 - niveau 3  
90 m<sup>2</sup>, 2 parking

Appartement 6 - niveau 3  
90 m<sup>2</sup>, 2 parking



+ 590 690 24 39 41



[www.laplagegrandcase.com](http://www.laplagegrandcase.com)



[contact@laplagegrandcase.com](mailto:contact@laplagegrandcase.com)



Stade de Grand Case

Grand-Case

NON-CONTRACTUAL DOCUMENTS AND ILLUSTRATIONS

